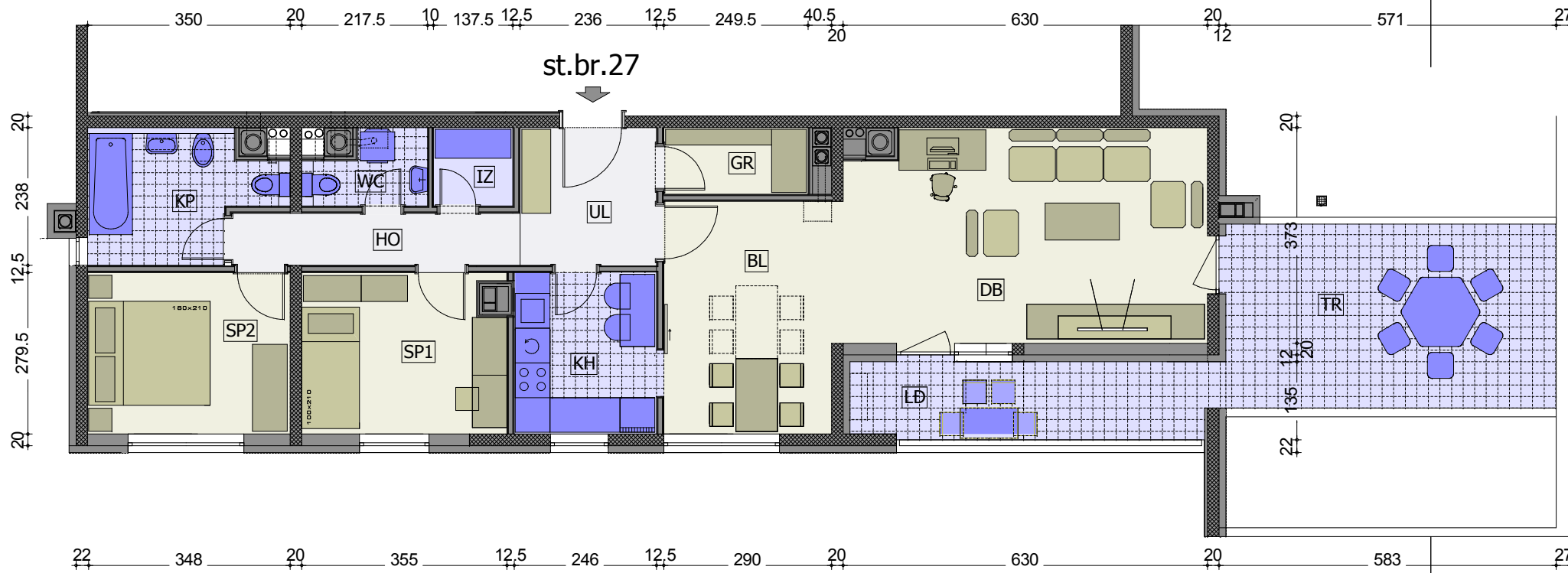
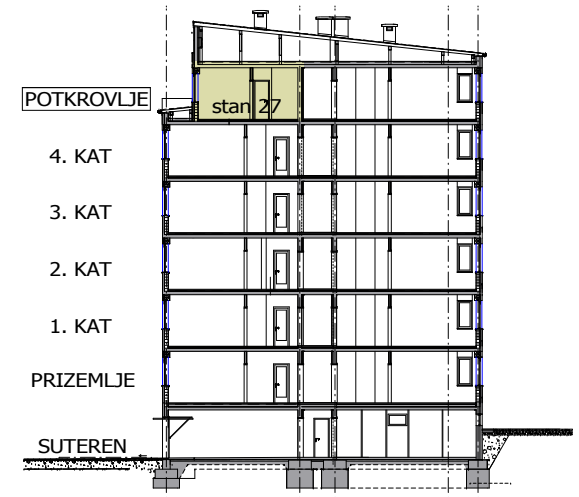
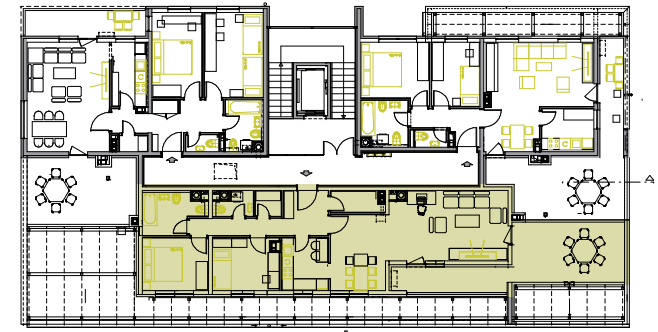


# STAMBENO-POSLOVNA GRAĐEVINA A2

## Stambeno naselje Novakova, Varaždin



### Stan br.27 /3 sobni/ P= 97,92m<sup>2</sup>

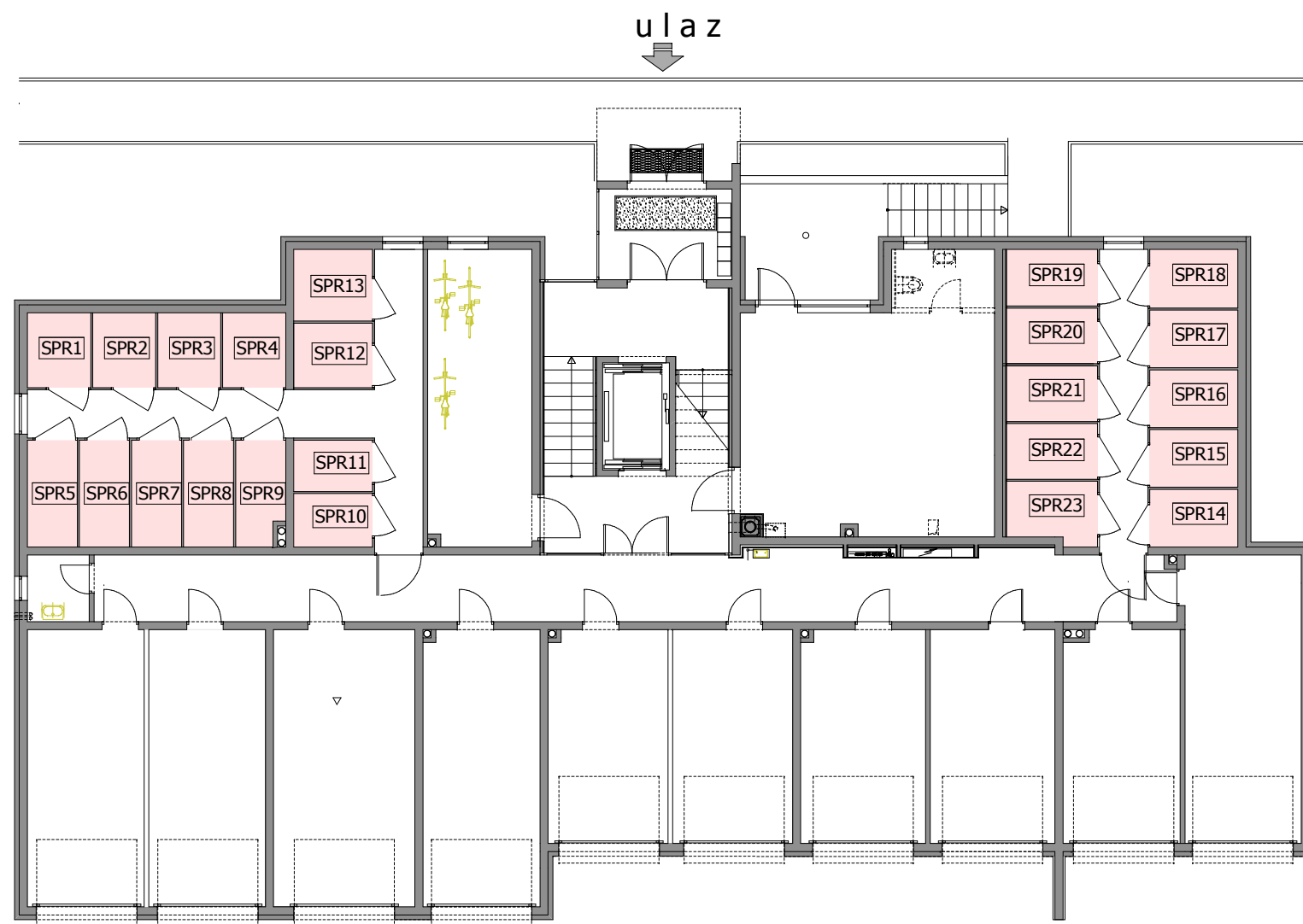
UL	ULAZ	parket	5,62m <sup>2</sup>
HO	HODNIK	parket	4,48m <sup>2</sup>
DB	DN. BORAVAK +	parket	23,30m <sup>2</sup>
BL	BLAGOVAONICA	ker.pl.	11,70m <sup>2</sup>
KH	KUHINJA	parket	6,87m <sup>2</sup>
SP1	SOBA ZA DVIJE OSOBE	parket	9,77m <sup>2</sup>
SP2	SOBA ZA DVIJE OSOBE	ker.pl.	9,60m <sup>2</sup>
KP	KUPAONICA	ker.pl.	6,62m <sup>2</sup>
WC	ZAHOD	ker.pl.	2,40m <sup>2</sup>
IZ	IZBA	parket	1,90m <sup>2</sup>
GR	GARDEROBA		3,05m <sup>2</sup>
UKUPNA ZATVORENA NKP			85,31m <sup>2</sup>
LD	LODA	gres.pl.	8,60x0,75= 6,45m <sup>2</sup>
TR	TERASA	gres .pl.	18,45x0,25= 4,61m <sup>2</sup>
SPR	SPREMIŠTE br.22	Tal-M	3,10x0.50= 1,55m <sup>2</sup>
NKP STANA			97,92m <sup>2</sup>

This drawing and all the information contained in it are the copyright of CONING. Any unauthorized usage empowers CONING to indemnification. All rights reserved.

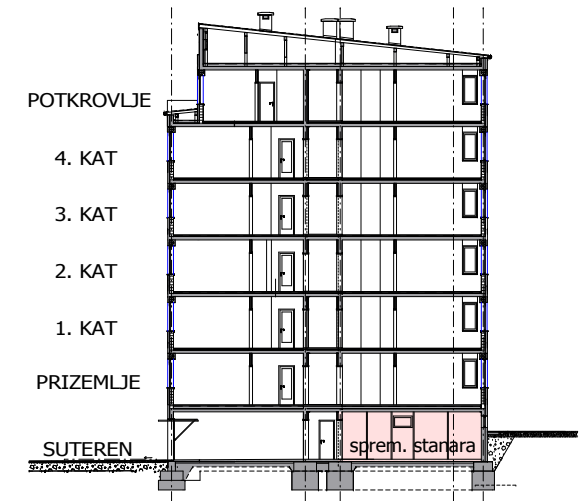
Ovaj crtež i svi podaci na njemu vlasništvo su poduzeća CONING. Koristištenje u nedogovorene svrhe povlači obvezu obestecenja. Sva prava pridržana.

This drawing and all the information contained in it are the copyright of CONING.  
Any unauthorized usage empowers CONING to indemnification. All rights reserved.

Ovaj crtez i svi podaci na njemu vlasništvo su poduzeća CONING. Korištenje  
u nedogovorene svrhe povlači obvezu obeštećenja. Sva prava pridržana.



# STAMBENO-POSLOVNA GRAĐEVINA A2 Stambeno naselje Novakova, Varaždin



## SPREMIŠTA STANARA

SPR1	SPREMIŠTE STANARA br. 1	Tal-M-kvarc	
SPR2	SPREMIŠTE STANARA br. 2	Tal-M-kvarc	
SPR3	SPREMIŠTE STANARA br. 3	Tal-M-kvarc	
SPR4	SPREMIŠTE STANARA br. 4	Tal-M-kvarc	
SPR5	SPREMIŠTE STANARA br. 5	Tal-M-kvarc	
SPR6	SPREMIŠTE STANARA br. 6	Tal-M-kvarc	
SPR7	SPREMIŠTE STANARA br. 7	Tal-M-kvarc	
SPR8	SPREMIŠTE STANARA br. 8	Tal-M-kvarc	
SPR9	SPREMIŠTE STANARA br. 9	Tal-M-kvarc	
SPR10	SPREMIŠTE STANARA br. 10	Tal-M-kvarc	
SPR11	SPREMIŠTE STANARA br. 11	Tal-M-kvarc	
SPR12	SPREMIŠTE STANARA br. 12	Tal-M-kvarc	
SPR13	SPREMIŠTE STANARA br. 13	Tal-M-kvarc	
SPR14	SPREMIŠTE STANARA br. 14	Tal-M-kvarc	
SPR15	SPREMIŠTE STANARA br. 15	Tal-M-kvarc	
SPR16	SPREMIŠTE STANARA br. 16	Tal-M-kvarc	
SPR17	SPREMIŠTE STANARA br. 17	Tal-M-kvarc	
SPR18	SPREMIŠTE STANARA br. 18	Tal-M-kvarc	
SPR19	SPREMIŠTE STANARA br. 19	Tal-M-kvarc	
SPR20	SPREMIŠTE STANARA br. 20	Tal-M-kvarc	
SPR21	SPREMIŠTE STANARA br. 21	Tal-M-kvarc	
SPR22	SPREMIŠTE STANARA br. 22	Tal-M-kvarc	
SPR23	SPREMIŠTE STANARA br. 23	Tal-M-kvarc	

## SPREMIŠTA STANARA