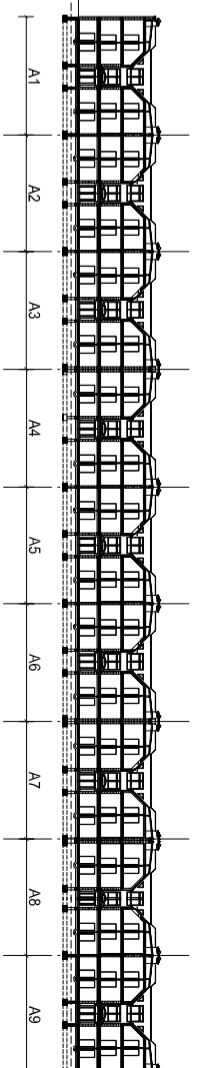
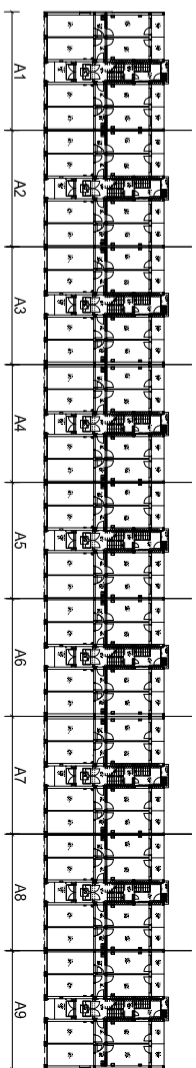
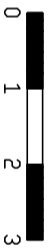
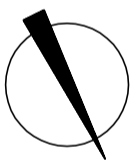
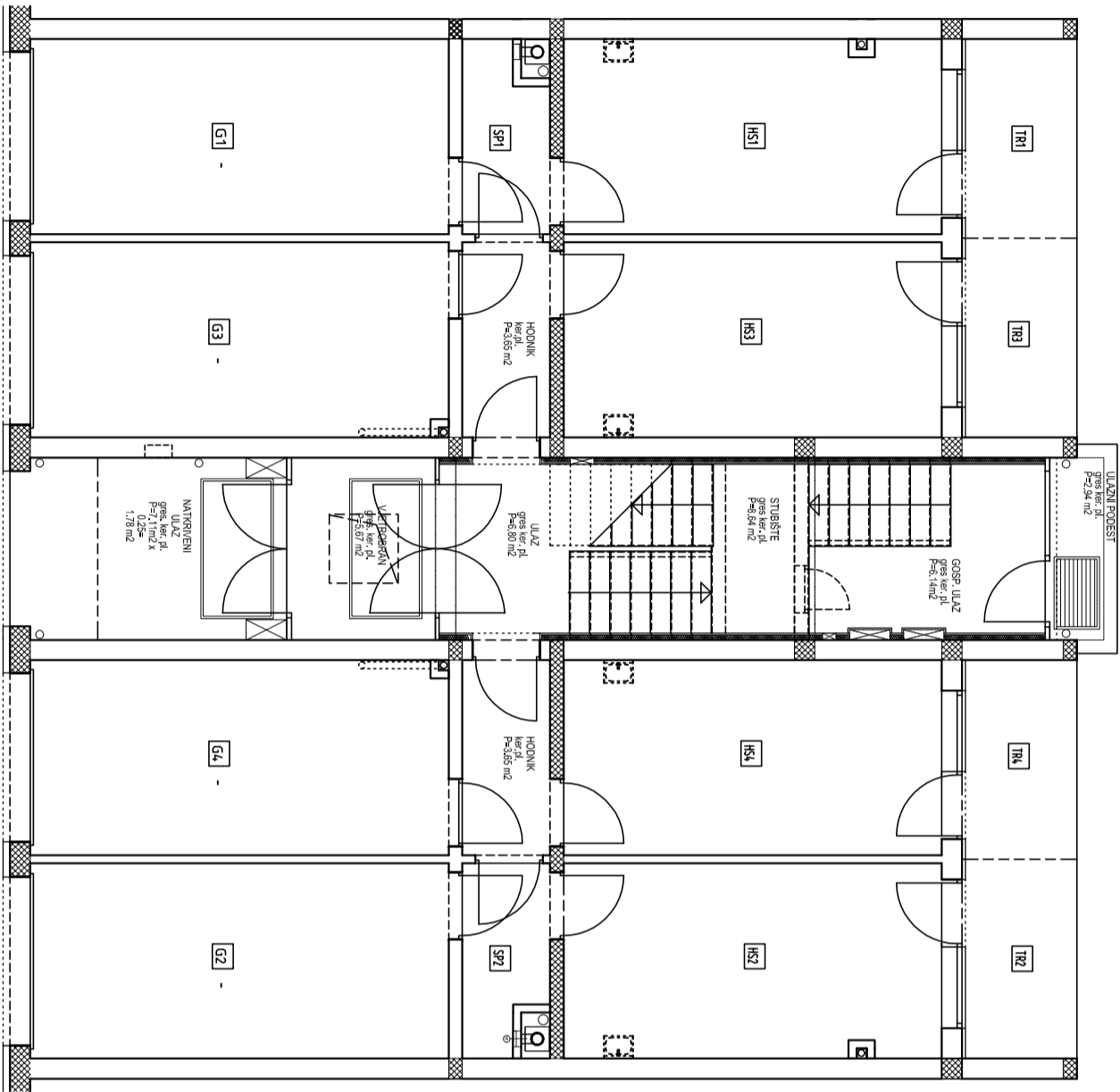


STAMBENA GRADEVINA A7

STAN br. 2-3 sobni /1. KAT/

UL	ULAZ	ker.pl.	9.70 m ²
DB+BL	DN. BORAVAK + BLAGOVAONA	parket	29.40 m ²
KH	KUHINJA	ker.pl.	6.14 m ²
SP1	SP. SOBA 1	parket	11.83 m ²
SP2	SP. SOBA 2	parket	12.47 m ²
KP	KUPAONICA	ker.pl.	5.58 m ²
WC	WC	ker.pl.	2.13 m ²
UKUPNA ZATVORENA NKP			77.25 m²
LG	LOGGIA	ker.pl. (5.57x0.75)=	4.18m ²
SP1	SPREMIŠTE 2	bet.podl. (3.19x0.5)=	1.60m ²
HS1	HOBİ SOBA 2	bet.podl. (15.79x0.8)=	12.63m ²
G2	GARAŽA 2	bet.podl. (17.61x0.75)=	13.21m ²
TR2	TERASA 2	gres.pl. (4.83x0.25)=	1.21m ²
NKP STANA			110.08m²



STAMBENA GRADEVINA A7

TLOCRT PRIZEMLJA