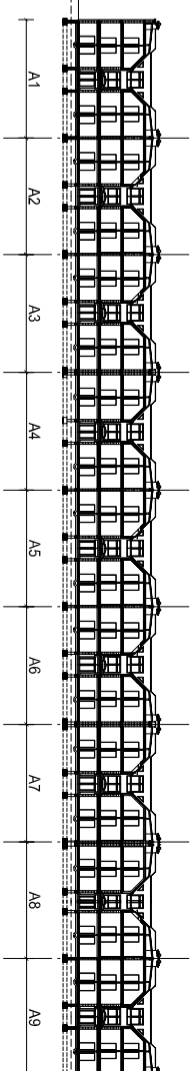
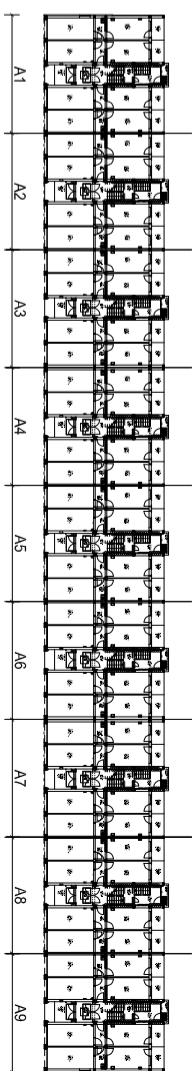
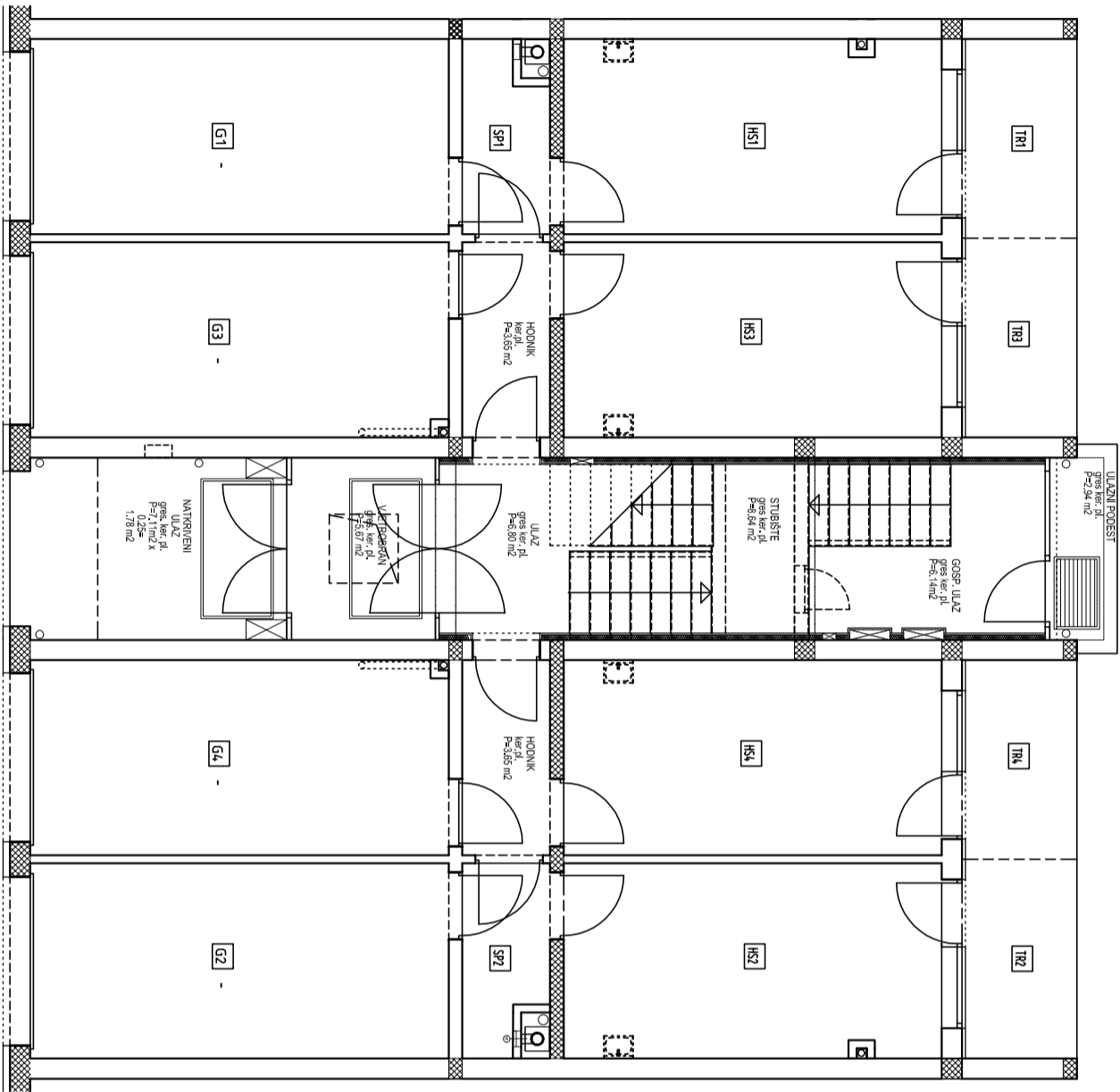


## STAMBENA GRADEVINA A5

### STAN br. 4-3 sobni /POTKROVLJE/

UL	ULAZ	ker.pl.	9.62 m <sup>2</sup>
DB+BL	DN. BORAVAK + BLAGOVAONA	parket	29.24 m <sup>2</sup>
KH	KUHINJA	ker.pl.	6.14 m <sup>2</sup>
SP1	SP. SOBA 1	parket	11.73 m <sup>2</sup>
SP2	SP. SOBA 2	parket	10.09 m <sup>2</sup>
KP	KUPAONICA	ker.pl.	5.58 m <sup>2</sup>
WC	WC	ker.pl.	1.50 m <sup>2</sup>
UKUPNA ZATVORENA NKP			73.90 m <sup>2</sup>
LG	LOGGIA	ker.pl. (5.57x0.75)=	4.18m <sup>2</sup>
HS1	HOBİ SOBA 4	bet.podl. (15.90x0.8)=	12.72m <sup>2</sup>
GL	GARAŽA 4	bet.podl. (17.54x0.75)=	3.16m <sup>2</sup>
TM	TERASA 4	gres.pl. (4.83x0.25)=	1.21m <sup>2</sup>
NKP STANA			105.17m <sup>2</sup>



**STAMBENA GRADEVINA A5**  
**TLOCRT PRIZEMLJA**