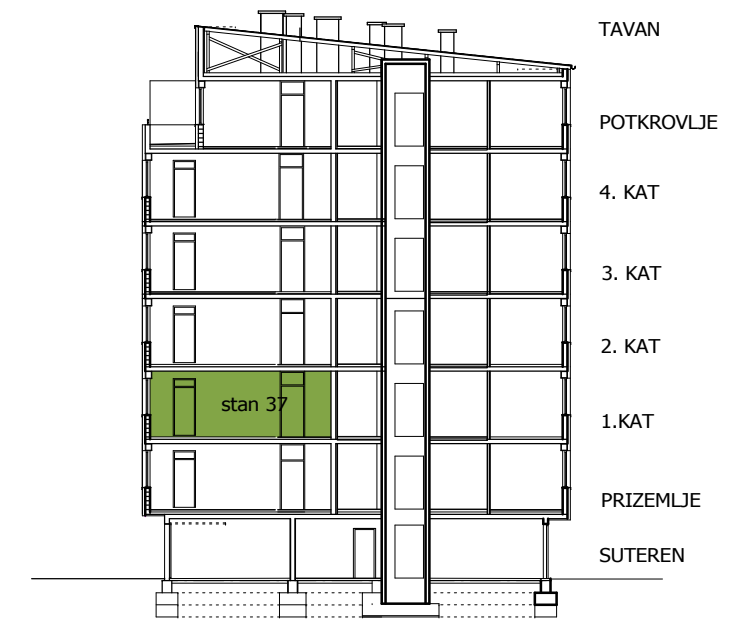
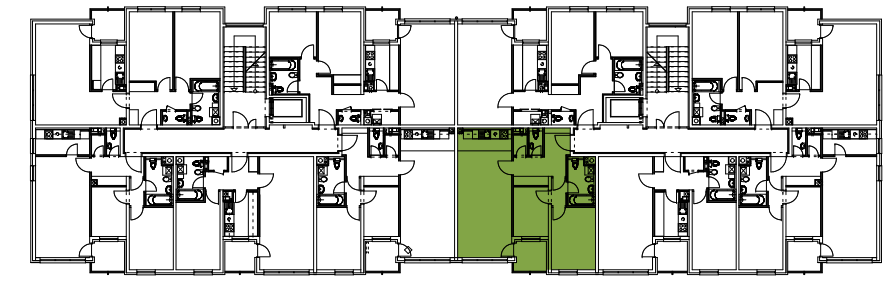




VIŠESTAMBENA GRAĐEVINA B1

Stambeno naselje Novakova, Varaždin



ULAZ "B" /2,5 sobni stan/ 86,94m²
stan broj : 37 / 1 kat /

UL	ULAZ	ker.pl.	3,23m ²
HO	HODNIK	ker.pl.	5,80m ²
DB+BL	DN. BORAVAK +BLAGOVAONICA	parket	25,31m ²
KH	KUHINJA	ker.pl.	5,25m ²
KP	KUPAONICA	ker.pl.	5,34m ²
WC	WC	ker.pl.	1,57m ²
IZ	IZBA	ker.pl.	1,19m ²
DZ	DEGAŽMAN	parket	1,95m ²
SP2	SOBA ZA DVIJE OSOBE	parket	11,99m ²
SP1	SOBA ZA JEDNU OSOBU	parket	7,54m ²
UKUPNA ZATVORENA NKP			69,17m²
LD	LOĐA	gres.pl.	4,15x0,75= 3,11m ²
G+SPR	GARAŽA+SPREMIŠTE br. 37	Tal-M	19,54x0.75= 14,66m ²
NKP STANA			86,94m²