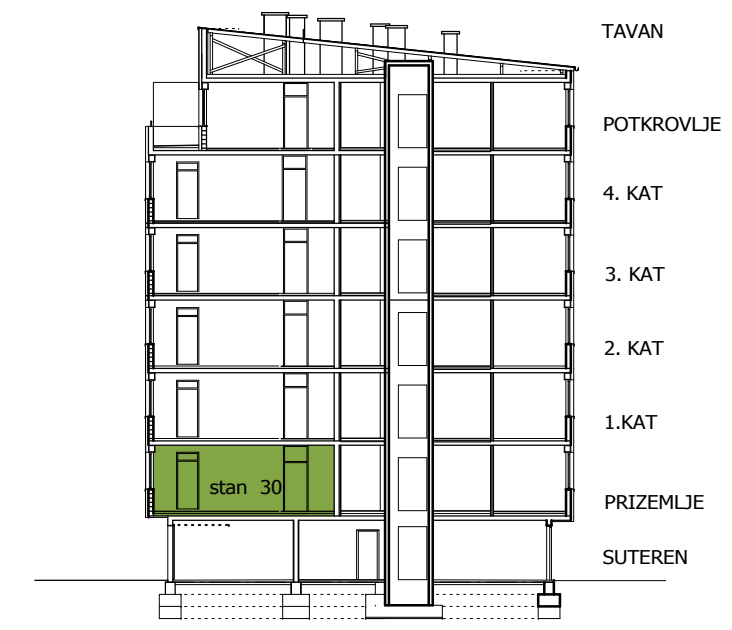
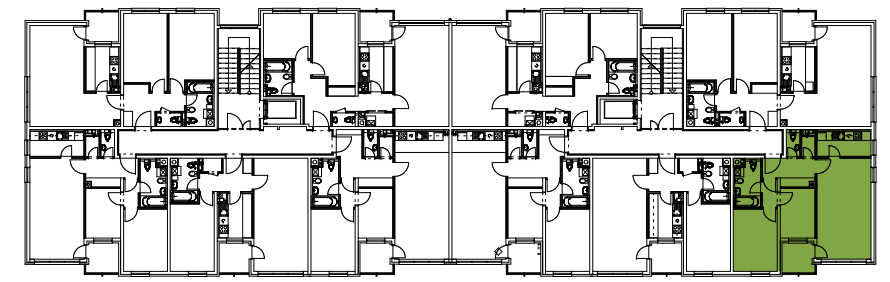




VIŠESTAMBENA GRAĐEVINA B1

Stambeno naselje Novakova, Varaždin



ULAZ "B" / 2,5 sobni stan/ 69,98m²
stan broj : 30 / prizemlje /

UL	ULAZ	ker.pl.	5,75m ²
DB+BL	DN. BORAVAK + BLAGOVAONICA	parket	23,95m ²
KH	KUHINJA	ker.pl.	6,30m ²
IZ	IZBA	ker.pl.	1,17m ²
KP	KUPAONICA	ker.pl.	5,41m ²
WC	WC	ker.pl.	1,57m ²
DZ	DEGAŽMAN	parket	1,95m ²
SP1	SOBA ZA JEDNU OSOBU	parket	7,51m ²
SP2	SOBA ZA DVIJE OSOBE	parket	11,97m ²
UKUPNA ZATVORENA NKP			65,58m ²
LD	LODA	gres.pl.	4,15x0,75= 3,11m ²
SPR	SPREMIŠTE br. 30	Tal-M	2,57x0,50= 1,29m ²
NKP STANA			69,98m ²