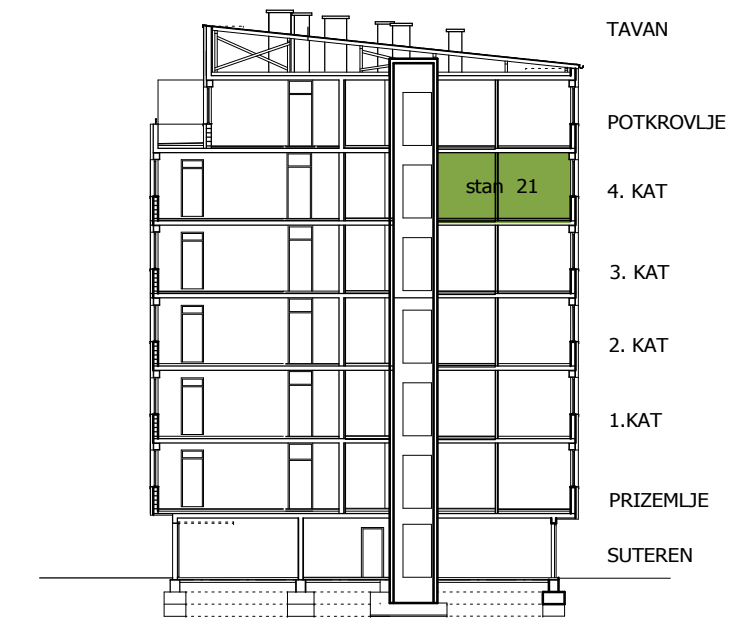
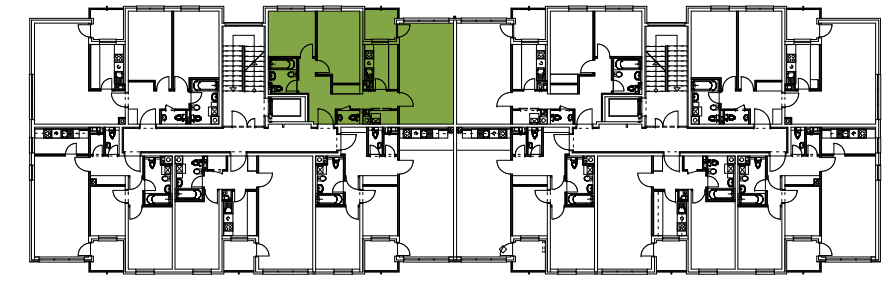




# VIŠESTAMBENA GRAĐEVINA B1

## Stambeno naselje Novakova, Varaždin

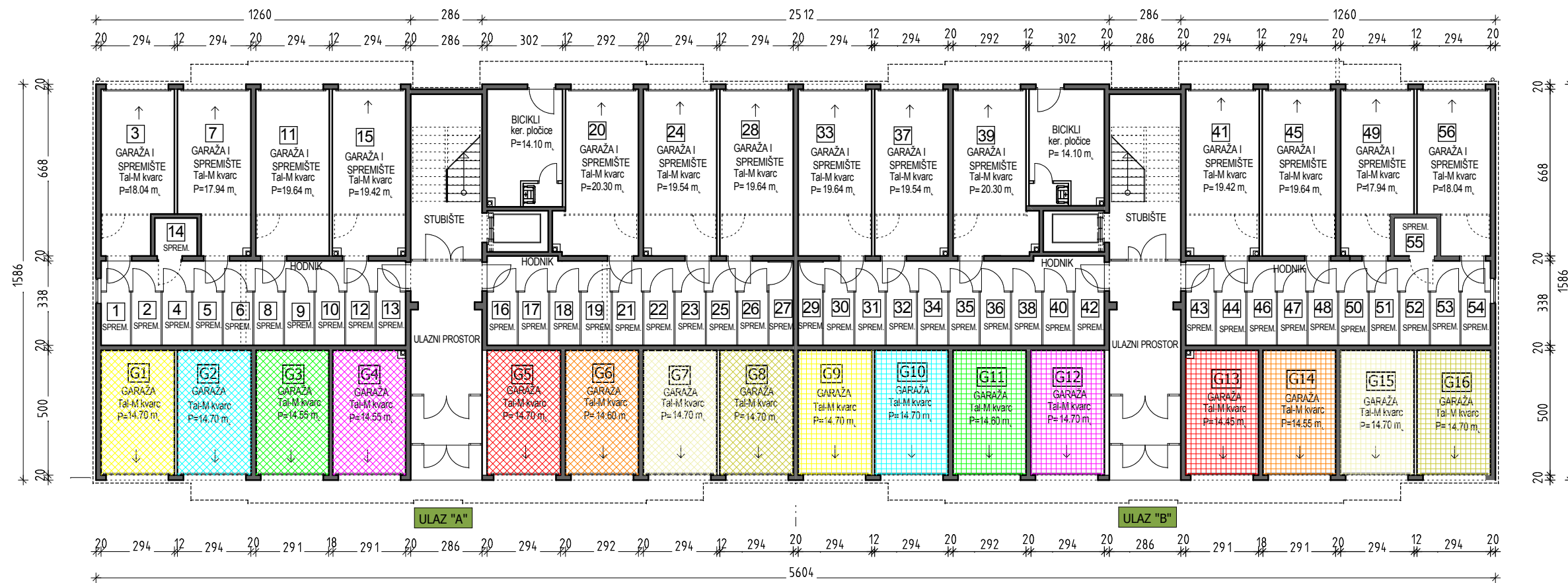


**ULAZ "A" / 3 sobni stan/ 76,80m<sup>2</sup>**  
**stan broj : 21 / 4 kat /**

UL	ULAZ	ker.pl.	9,03m <sup>2</sup>
HO	HODNIK	ker.pl.	2,69m <sup>2</sup>
DB+BL	DN. BORAVAK +BLAGOVAONICA	parket	23,95m <sup>2</sup>
KH	KUHINJA	ker.pl.	6,34m <sup>2</sup>
KP	KUPAONICA	ker.pl.	4,12m <sup>2</sup>
WC	WC	ker.pl.	1,30m <sup>2</sup>
GR	GARDEROBA	ker.pl.	1,62m <sup>2</sup>
SP2	SOBA ZA DVIJE OSOBE	parket	12,22m <sup>2</sup>
SP2	SOBA ZA DVIJE OSOBE	parket	11,13m <sup>2</sup>
UKUPNA ZATVORENA NKP			72,40m <sup>2</sup>
LD	LODA	gres.pl.	4,15x0,75= 3,11m <sup>2</sup>
SPR	SPREMIŠTE br. 21	Tal-M	2,57x0,50= 1,29m <sup>2</sup>
NKP STANA			76,80m <sup>2</sup>

# VIŠESTAMBENA GRAĐEVINA B1

## Stambeno naselje Novakova, Varaždin



G1	GARAŽA	14.70 x 0.75	Tal-M kvarc	11,03m <sup>2</sup>
G2	GARAŽA	14.70 x 0.75	Tal-M kvarc	11,03m <sup>2</sup>
G3	GARAŽA	14.55 x 0.75	Tal-M kvarc	10,91m <sup>2</sup>
G4	GARAŽA	14.55 x 0.75	Tal-M kvarc	10,91m <sup>2</sup>
G5	GARAŽA	14.70 x 0.75	Tal-M kvarc	11,03m <sup>2</sup>
G6	GARAŽA	14.60 x 0.75	Tal-M kvarc	10,95m <sup>2</sup>
G7	GARAŽA	14.70 x 0.75	Tal-M kvarc	11,03m <sup>2</sup>
G8	GARAŽA	14.70 x 0.75	Tal-M kvarc	11,03m <sup>2</sup>
G9	GARAŽA	14.70 x 0.75	Tal-M kvarc	11,03m <sup>2</sup>
G10	GARAŽA	14.70 x 0.75	Tal-M kvarc	11,03m <sup>2</sup>
G11	GARAŽA	14.60 x 0.75	Tal-M kvarc	10,95m <sup>2</sup>
G12	GARAŽA	14.70 x 0.75	Tal-M kvarc	11,03m <sup>2</sup>
G13	GARAŽA	14.55 x 0.75	Tal-M kvarc	10,91m <sup>2</sup>
G14	GARAŽA	14.55 x 0.75	Tal-M kvarc	10,91m <sup>2</sup>
G15	GARAŽA	14.70 x 0.75	Tal-M kvarc	11,03m <sup>2</sup>
G16	GARAŽA	14.70 x 0.75	Tal-M kvarc	11,03m <sup>2</sup>
NKP GARAŽA				175,84m <sup>2</sup>

ULAZ "A" i "B" garaže 175,84m<sup>2</sup>  
TLOCRT SUTERENA