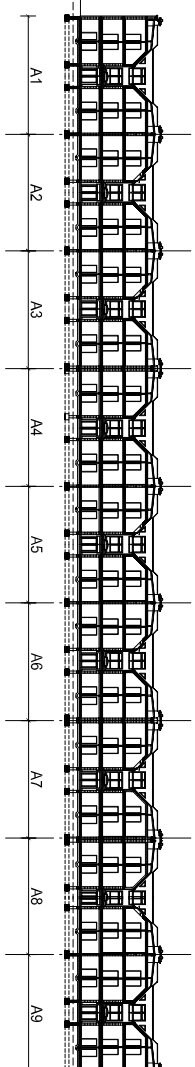
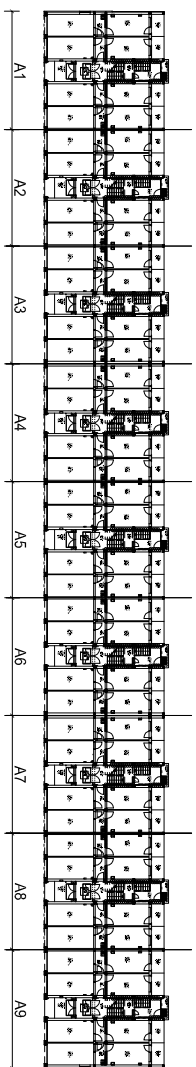
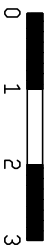
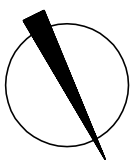
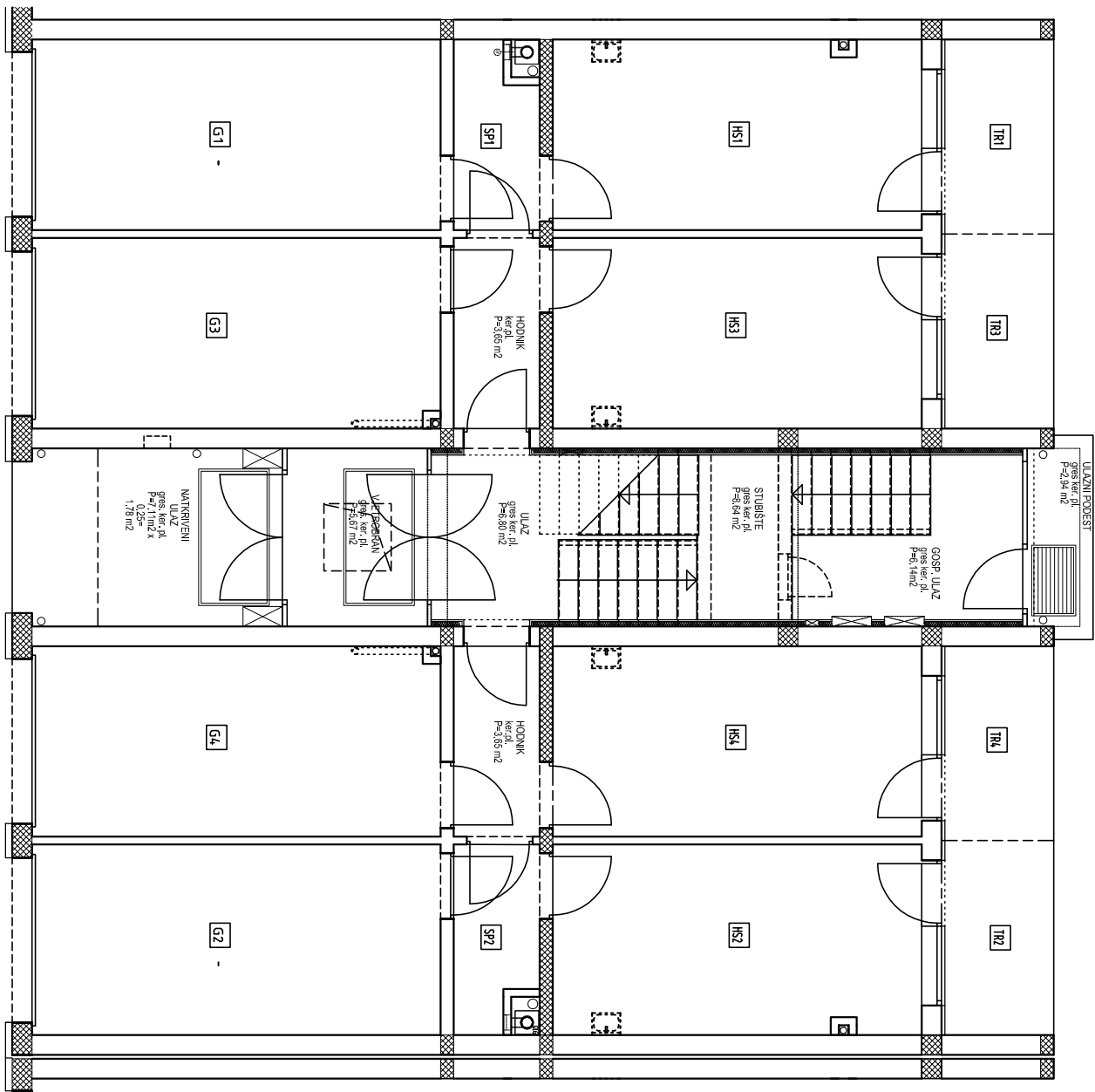


STAMBENA GRADEVINA A6

STAN br. 3-3 sobni /POTKROVLJE/

UL	ULAZ	ker.p.l.	9.62 m ²
DB+BL	DN. BORAVAK + BLAGOVAONA	parket	29.61 m ²
KH	KUHNJA	ker.p.l.	6.36 m ²
SP1	SP. SOBA 1	parket	12.05 m ²
SP2	SP. SOBA 2	parket	10.09 m ²
KP	KUPAONICA	ker.p.l.	5.86 m ²
WC	WC	ker.p.l.	1.50 m ²
UKUPNA ZATVORENA NKP			75.09 m²
LG	LOGGIA	ker.p.l. (5.57x0.75)	= 4.18m ²
H3	HOBI SOBA 3	bet.podl. (15.90x0.8)	= 12.72m ²
G3	GARAŽA 3	bet.podl. (17.54x0.75)	=13.16m ²
TB3	TERASA 3	gres.p.l. (4.83x0.25)	= 1.21 m ²
NKP STANA			106.36m²



STAMBENA GRADEVINA A6
TLOCRT PRIZEMLJA