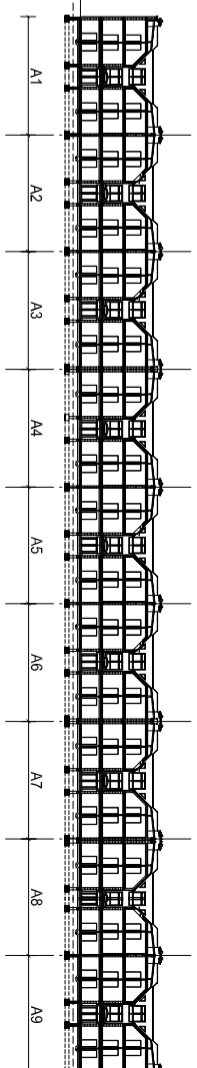
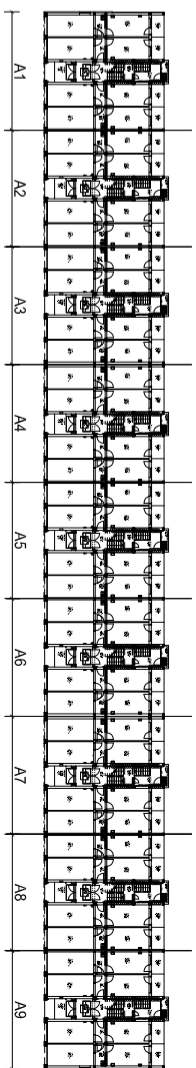
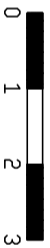
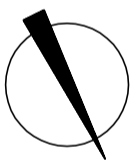
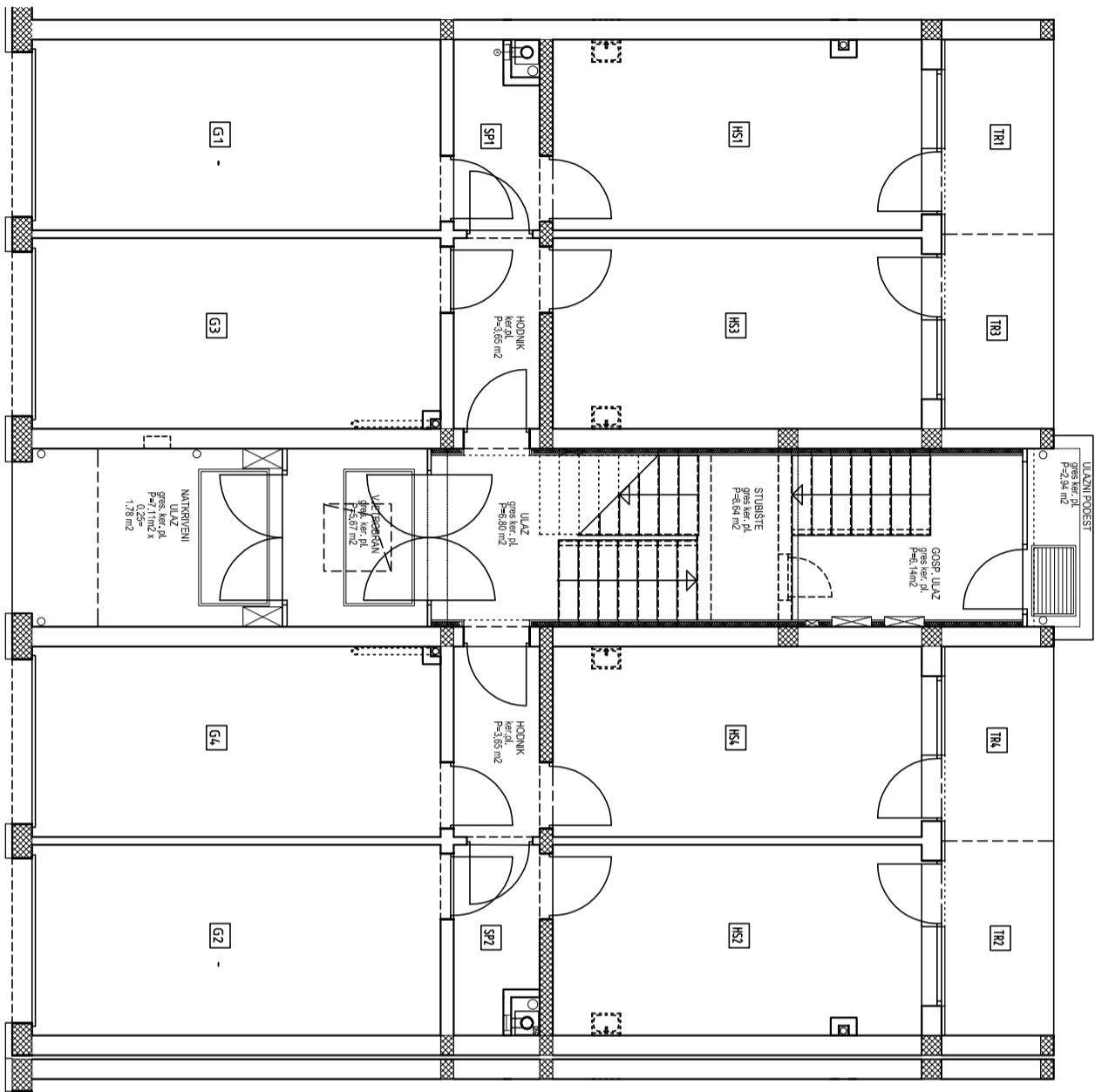


STAMBENA GRADEVINA A3

STAN br. 4-3 sobni /POTKROVLJE/

UL	ULAZ	ker.pl.	9.62 m ²
DB+BL	DN. BORAVAK + BLAGOVAONA	parket	29.61 m ²
KH	KUHINJA	ker.pl.	6.36 m ²
SP1	SP. SOBA 1	parket	12.05 m ²
SP2	SP. SOBA 2	parket	10.09 m ²
KP	KUPAONICA	ker.pl.	5.86 m ²
WC	WC	ker.pl.	1.50 m ²
UKUPNA ZATVORENA NKP			75.09 m ²
LG	LOGGIA	ker.pl. (5.57x0.75)	= 4.18m ²
HS1	HOBİ SOBA 4	bet.podl. (15.90x0.8)	= 12.72m ²
GL	GARAŽA 4	bet.podl. (17.54x0.75)	= 13.16m ²
TM	TERASA 4	gres.pl. (4.83x0.25)	= 1.21 m ²
NKP STANA			106.36m ²



STAMBENA GRADEVINA A3
TLOCRT PRIZEMLJA