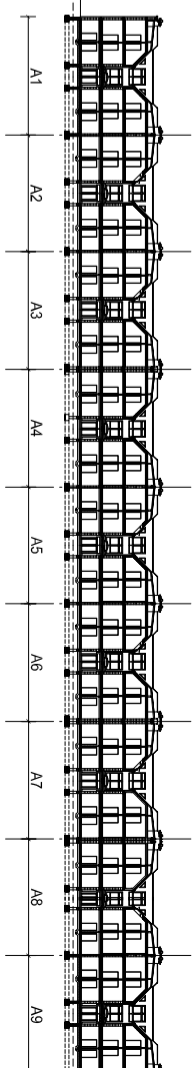
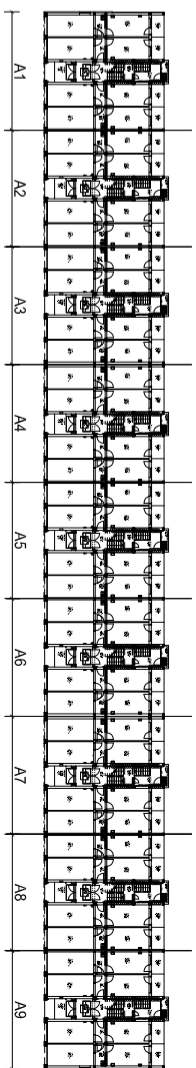
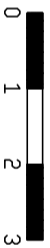
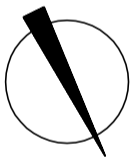
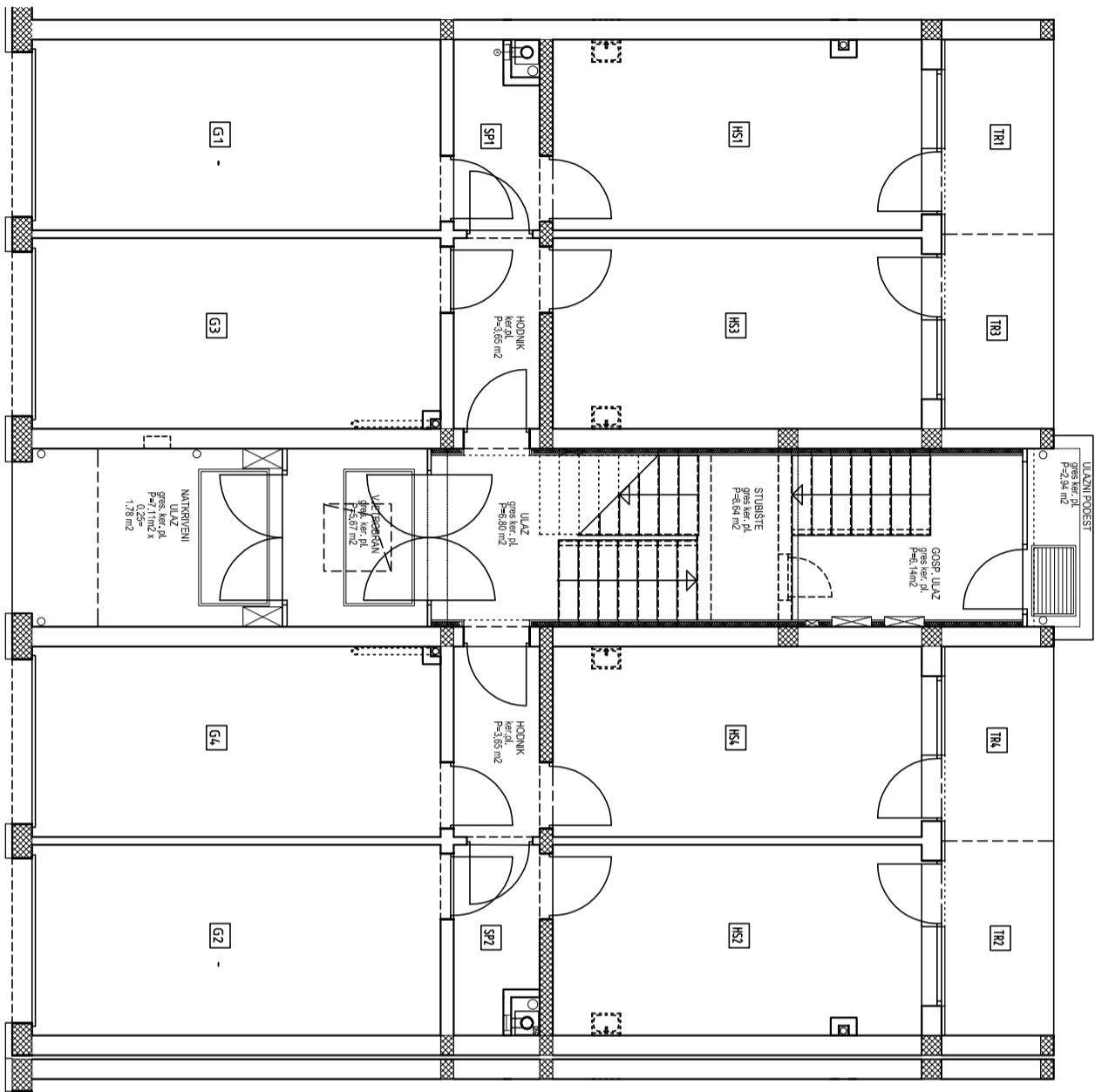


## STAMBENA GRADEVINA A3

### STAN br. 3-3 sobni /POTKROVLJE/

UL	ULAZ	ker.pl.	9.62 m <sup>2</sup>
DB+BL	DN. BORAVAK + BLAGOVAONA	parket	29.61 m <sup>2</sup>
KH	KUHINJA	ker.pl.	6.36 m <sup>2</sup>
SP1	SP. SOBA 1	parket	12.05 m <sup>2</sup>
SP2	SP. SOBA 2	parket	10.09 m <sup>2</sup>
KP	KUPAONICA	ker.pl.	5.86 m <sup>2</sup>
WC	WC	ker.pl.	1.50 m <sup>2</sup>
<b>UKUPNA ZATVORENA NKP</b>			<b>75.09 m<sup>2</sup></b>
LG	LOGGIA	ker.pl. (5.57x0.75)=	4.18m <sup>2</sup>
HS3	HOBİ SOBA 3	bet.podl. (15.90x0.8)=	12.72m <sup>2</sup>
G3	GARAŽA 3	bet.podl. (17.54x0.75)=	3.16m <sup>2</sup>
TR3	TERASA 3	gres.pl. (4.83x0.25)=	1.21m <sup>2</sup>
<b>NKP STANA</b>			<b>106.36m<sup>2</sup></b>



**STAMBENA GRADEVINA A3**  
**TLOCRT PRIZEMLJA**